



LANDSCAPING INSPIRATION GUIDE.

—



ENHANCE YOUR SURROUNDINGS

AND RECEIVE A \$2,000 LANDSCAPING REBATE.

Simply select your preferred landscaping design theme from our Landscaping Inspiration Guide and receive a \$2,000 rebate.



To ensure Hartleigh remains a community you're proud to call home, we're encouraging residents to invest in their front garden landscaping to help create beautiful streetscapes throughout the estate.

To qualify for the rebate, simply follow the process below:

1. Select your preferred front yard garden design from this brochure and purchase all relevant plants from the nursery of your choice – ensuring your garden also complies with the Landscaping Design Principles outlined herein. Make sure you retain your receipts for all gardening and landscaping purchases to be eligible for your rebate as outlined under point 4.
2. OR submit your own similar landscape design (prepared by a qualified landscape professional) to the Hartleigh Design Review Panel for approval (submit via email or post to the address referenced under point 4).
3. Then, ensure your front yard garden and landscaping is completed within 90 days of the issued Certificate of Occupancy, unless this is during the summer period, in which case the garden must be completed by the 30th April.
4. To claim your rebate upon completion of your landscaping, write to Hartleigh's Development Manager, Greg Miller, via email or post and attach or include your garden and landscaping receipts along with a photo of your completed garden, and we'll be in touch to coordinate your rebate:

Email: greg.miller@nationalpacific.com.au

Post: Greg Miller, Development Manager

Hartleigh Clyde, Burbank House, Level 1, 100 Franklin Street, Melbourne, Victoria 3000

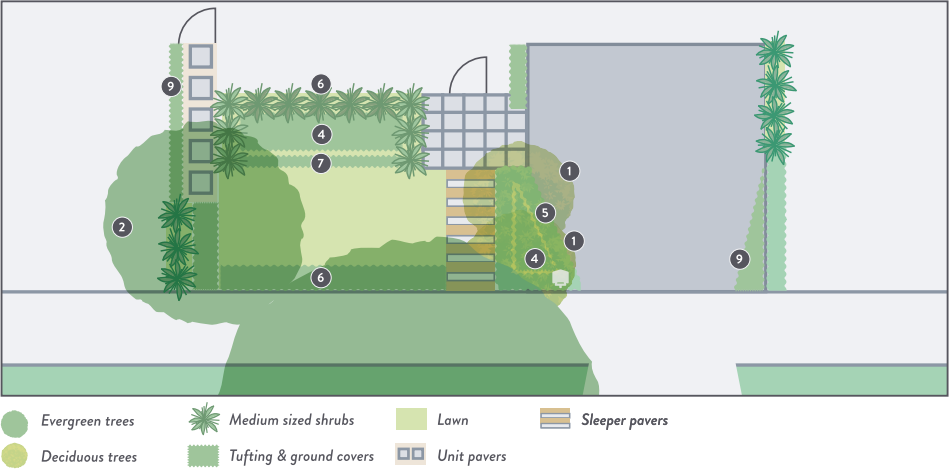


LANDSCAPING DESIGN PRINCIPLES

1. Your front garden should include a minimum of one canopy tree – installed in a 45Lt pot/2.0m high.
2. Vegetation selection must include drought tolerant, adaptable plant species suited to the local conditions of Clyde as suggested in the plant theme/palettes provided.
3. A minimum of 50% of the front garden must include permeable surfaces, including but not limited to grass, gravel and mulch.
4. Landscaping elements must be used to soften, or screen the appearance of storage, services and parking areas.
5. Landscape elements and planting must be in proportion to the availability of space provided and be well planted so as to enable full coverage of the garden bed, when established.
6. Landscaping features must maintain a degree of passive surveillance of entry points to dwellings.
7. Landscape elements must not interfere with utility services.
8. Selection of appropriate plant species and heights of landscape elements should not impact on adjacent properties through overshadowing or intrusive root systems.
9. A minimum 500mm wide planting strip is to be provided between the driveway and the side boundary (or 300mm if the garage is located on the side boundary).

FRONT YARD INSPIRATION GUIDE

FORMAL GARDEN



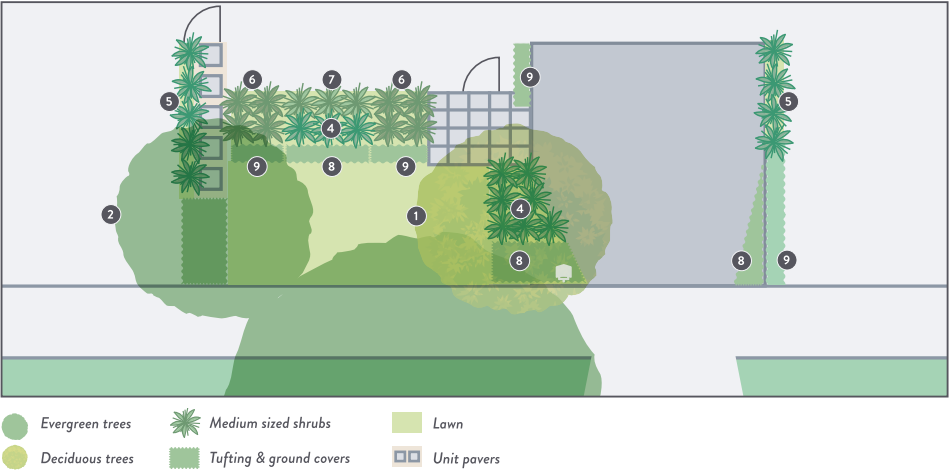
DESIGN INTENT:

A formal garden with a symmetrical and structured design through its layout and plant selection. The design features a low hedge along the frontage and sides to border your home with luscious greenery. Canopy trees are placed to frame your property and create a sense of entry and address to your home. Planting is carefully selected to consist of greens with close consideration to its plant forms and foliage textures.

INDICATIVE PLANTS:



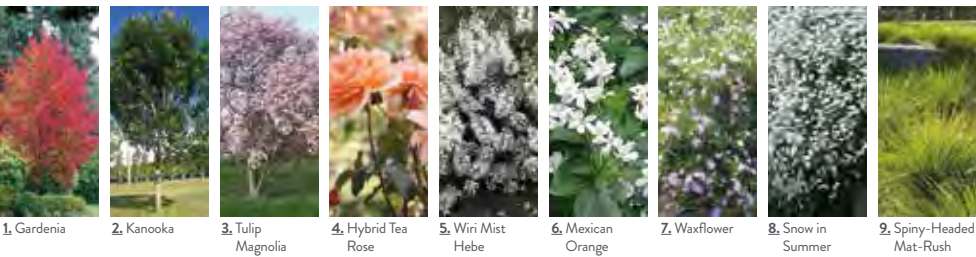
TRADITIONAL GARDEN



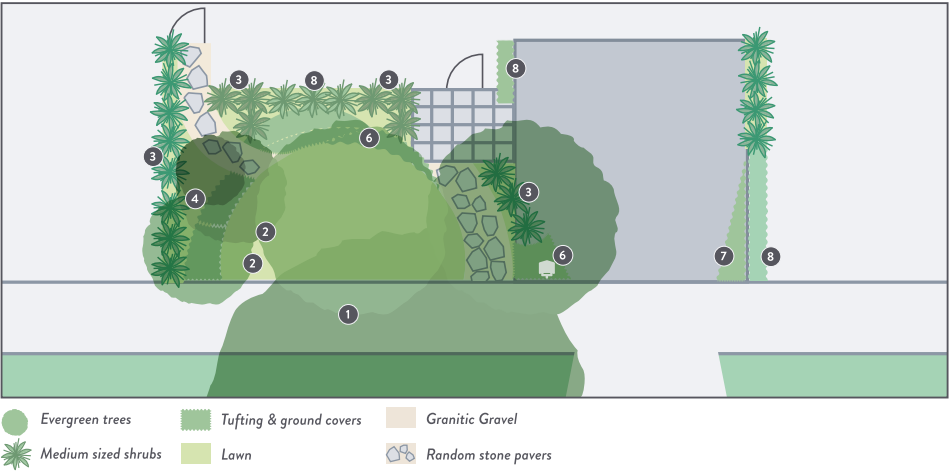
DESIGN INTENT:

This traditional garden features the classic Aussie lawn frontage. Canopy trees are well-placed to allow a framed view from your living space as well as providing privacy from the street. Planting is carefully selected to consist of floral spacing and well considered traditional based planting.

INDICATIVE PLANTS:



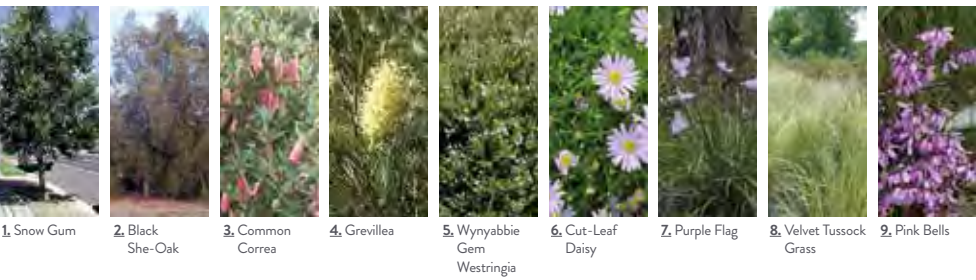
NATIVE GARDEN



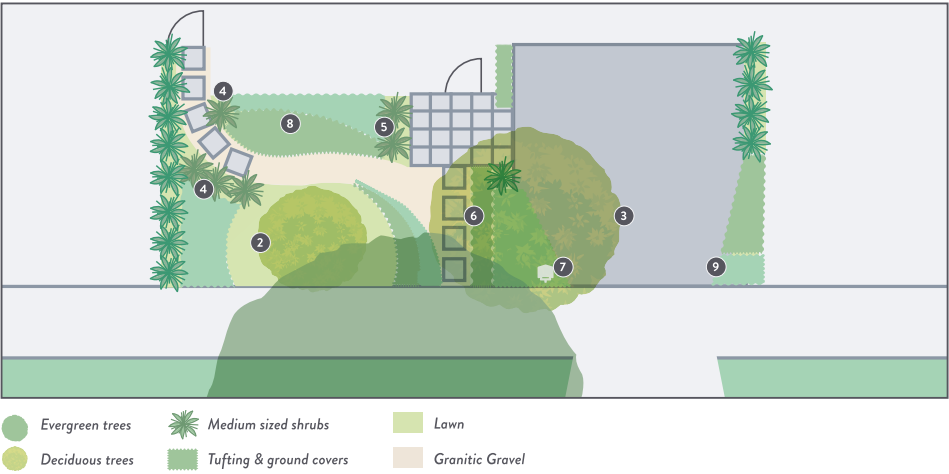
DESIGN INTENT:

This design features paths with stone pavers which complement the bush organic garden setting. The design features large arcs which define the layout. The planting design consists of multiple trees which complement the organic setting whilst offering privacy from the street. This design consists of classic native plants and shrubbery.

INDICATIVE PLANTS:



COTTAGE GARDEN



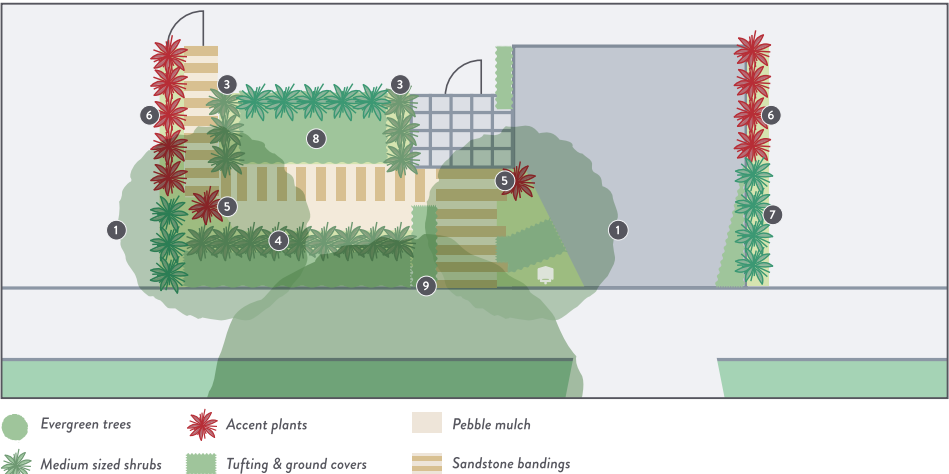
DESIGN INTENT:

Cottage garden with a native planting twist. This design features a path which gently winds its width across the garden. The design is a combination of organic and traditional, allowing plants to cascade over the path and weave through each other creating the cottage charm. The planting consists of dense planting and a mixture of ornamental floristic and textured plants.

INDICATIVE PLANTS:



CONTEMPORARY GARDEN



DESIGN INTENT:

Contemporary garden with a dash of the bush, low maintenance and modern shapes. The modern garden design draws upon simplicity and low maintenance, with a sense of sophistication. The interface with the street consists of accent plants providing contrast and colour.

INDICATIVE PLANTS:

